

CONSTRUCTION

2788 138th Ave NW, Alexander, ND 58831

2Part Equipment Reduction

AUCTION

TUESDAY, MAY 25, 2021

PREVIEW: Monday, May 10 8AM-5PM | LOADOUT: Tuesday, May 25 – Saturday, June 12 from 8AM-5PM. No loadout Memorial Day.

Live On-Site Equipment
Starting at 10AM

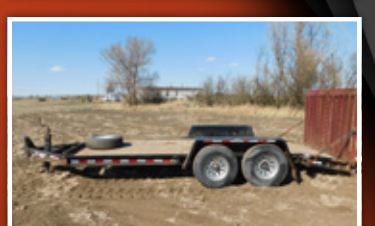
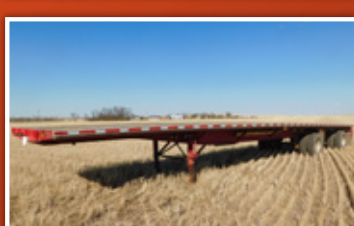
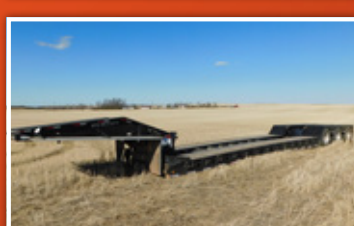
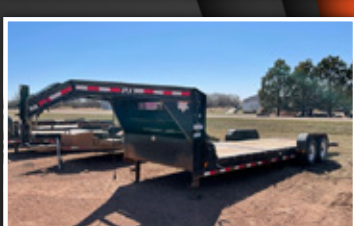
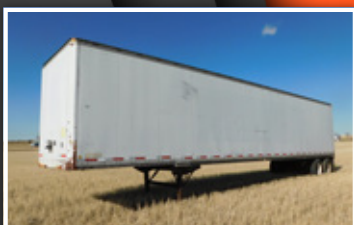
Online Equipment
Starting at 6PM



TRACTORS



TRUCKS & TRAILERS



FLIP TO VIEW COMPLETE LIST!

LUPINE CONSTRUCTION INC.

Terry Elliot, 701.651.3700, and Tom Elliot, 701.651.3310,
or Terry Moe at Steffes Group, 701.237.9173 or 701.580.2426

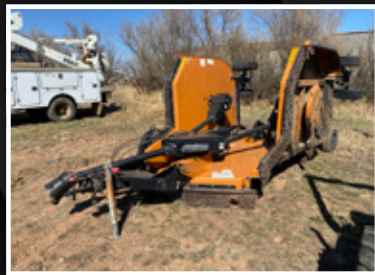
701.237.9173 | SteffesGroup.com

Steffes Group, Inc., 2000 Main Avenue East, West Fargo, ND 58078



TERMS: All items sold as is where is. Payment of cash or check must be made sale day before removal of items. Statements made auction day take precedence over all advertising. \$35 documentation fee applies to all titled vehicles. Titles will be mailed. Canadian buyers need a bank letter of credit to facilitate border transfer. Scott Steffes ND81, Brad Olstad ND319, Max Steffes ND999, Justin Ruth ND2019





Live On-Site Equipment Starting at 10AM

DOZERS

2015 John Deere 700K XLT dozer, CAH, wired for TopCon, 6-way S-blade, double barrel multi-shank ripper, 22" tracks, 3,123 hrs., S/N1T0700KXHC228619
2012 John Deere 700J XLT dozer, CAH, 6-way S-blade, double barrel multi-shank ripper, 22" tracks, 6,197 hrs., S/N1T0700JXCBD204233

MOTOR GRADER

John Deere 770CH Series II motor grader, 14' moldboard, front lift group, multi-shank ripper, 14.00R24 tires, 11,863 hrs., S/NDW770CH582600, work orders available

EXCAVATORS & ATTACHMENTS

2019 John Deere 245 GLC excavator, zero turn, aux. hyd., 9'6" stick, quick attach, 33" bucket, 32" TBG, 1,150 hrs., S/N1FF245GXCF801301, John Deere warranty until April 22, 2025 or 5,000 hrs.
2012 John Deere 180 GLC excavator, aux. hyd., 10' stick, hyd. quick tach, 34" bucket, 32" TBG, 7,788 hrs., S/N1FF180GXECE020067, work orders available
Central Fabricating frost bucket, 19", (3) front & (5) belly teeth, S/N170127
Felco compaction bucket, 26", S/N02R24602437
IAG tooth bucket, 26", 4-tooth
John Deere tooth bucket, 32", 7-tooth, for excavator, S/NJ000045476-1
John Deere tooth bucket, 23", 5-tooth, for excavator
WerkBrau tooth bucket, 30", 4-tooth, for John Deere Model 240/270, S/N167233-1-3
Shop-built moldboard attachment for 30" bucket tooth bucket, 19", 4-tooth
Paladin frost ripper

MINI EXCAVATORS

2019 John Deere 85G mini excavator, CAH, aux. hyd., hyd. thumb, hyd. quick connect bucket, swing away boom, dozer, rubber tracks, 920 hrs., S/N1FF085GXLJ020452
2013 John Deere 50D mini excavator, CAH, aux. hyd., 5'6" stick, hyd. thumb, 19" bucket, swing-away boom, dozer, 16" tracks, 3,375 hrs., S/N1FF085GXLJ020452

TELEHANDLER

2011 Gehl RS8-44 telehandler, CAH, JD diesel, 4x4, 3-section boom, 8,000 lb. lift, 13.00-24T tires, 3,464 hrs., S/NRS844JD0517191

LOADER BACKHOE & ATTACHMENTS

2011 John Deere 310SJ loader backhoe, 4x4, 6' stick, extend-a-hoe, hyd. quick attach, 1.2 yd. bucket, 12.5/80R18 front tires, 19.5R24 rear tires, S/N1T0310SJCBD209834
Vetter pallet forks, 48", for loader backhoe
2019 Magnum RHB306-6BA loader backhoe attachment, 1022 working weight, 12-24 flow rate, 1900-2500 operating pressure, S/N306-H1428
2017 Magnum RHP loader backhoe plate compactor, 20v, 959 working weight, 13.2-19.0 flow rate, 1450-2000 operating pressure, S/N20-H218

BORING & TRENCHING EQUIPMENT

2018 Ditch Witch JT10 directional drill, Deutz TD2.9 Tier 4 diesel, approx. (54) 6' sticks pipe, 339 hrs., S/NDWJT10XAJ0000416, with 2019 Ditch Witch FMSX mixing system, 500 gal. tank, Honda GX160 gas engine, on Felling FT-161 Drill Series tandem axle pintle hitch trailer, 3' dovetail, ramps, 8-bolt hubs, trailer VIN#5FTCE2729L2000918, system S/NDWPFM5XAEK0000658
Vermeer D20X22 Series II directional drill, Kubota diesel, hyd. loading, pipe basket w/(39) 10' sticks pipe, 12" tracks, 3,198 hrs., S/N1VR6180T0B1000562
Pipe box w/(31) sticks 10' pipe
Pallet of subs & reamers for Vermeer D20X22
Vermeer MX125 mixing system, 300 gal., Honda GX160 motor, Monarch 3" pump, pump S/NBSGF12HGS, system S/N1VRX030U781001560
2012 Vactron VT-16LPH tandem axle pintle hitch vac trailer, Vermeer LP555 SDT vac, Yanmar diesel, hyd. raise, 6" rear discharge, manual batch, approx. 500 gal. steel tank, dual 100 gal. poly tanks, remote control, electric brakes
Ditch Witch 2300 rear trencher, 57" front blade, 80" trench bar, shows 398 hrs., S/N800373
2011 Rammax trench packer, 16.8kw, hrs. unknown, S/N60322
2005 Wacker trench packer, 3,300 lbs., hrs. unknown, S/N6614808

WHEEL LOADER

2010 John Deere 304J wheel loader, CAH, hyd. quick attach, 1.4 yd. bucket, fenders, 405/70R20 tires, 2,529 hrs., S/N1LU304JXEZB029099

SKID STEER LOADER & ATTACHMENTS

2013 John Deere 326D skid steer loader, CAH, 2 spd., ISO, high flow, HO controls, hyd. quick tach, Work-Rite 78" bucket w/bolt-on cutting edge, rear weights, tires, 1,761 hrs., S/N1T0326DKKCG23U315
Bobcat rock bucket, 82", S/N7185947
Bobcat industrial grapple, 80", S/NAF0P03127
Bobcat auger bits: 9", 12", 17"
Bobcat containment sweeper, 72", for skid steer loader, S/N783701826
Degelman SB800 snow bucket, 96", for skid steer loader, S/NSB3453
Erskine hyd. snowblower, 84", for skid steer loader
Frakine auger, for skid steer loader
Haugen manbasket, 114", S/NMDO5479
Haugen snow bucket, 84", S/NMDO12272
Bobcat finishing mower, 72", S/NA8X1B02459
John Deere Worksite Pro pallet forks, 48", for skid steer loader

John Deere Worksite Pro forks

48", for skid steer loader
John Deere Worksite quick tach adapter, John Deere 304 loader to skid steer loader mount
Hyd. scoop bucket, 86", w/hyd. reach dump, for skid steer loader
Manual straight blade, 90", for skid steer loader
Rock bucket, 71", for skid steer loader

SEMI TRACTORS

2007 Western Star 4900FA tri-axle, 36" sleeper, C15 Cat, 625 hp., 18 spd., engine brake, air susp., air slide 5th, air lift steerable 3rd axle, double diff lock, wet kit, 16,000 lb. fronts, 46,000 lb. rears, 11R24.5 tires, 925,612 miles, New front end, work orders available
1999 Freightliner FLD120 day cab, Series 60 Detroit, 13 spd., engine brake, diff lock, wet kit, air lift steerable 3rd axle, 12,000 lb. fronts, 40,000 lb. rears, 252" WB, 11R22.5 tires, 744,481 miles, work orders available

BUCKET TRUCK

2008 GMC C5500 single axle bucket truck, Duramax diesel, 11' fiberglass service body, Versalift VST 240101 telescoping bucket, 40' reach, 300 lb., (8) toolboxes, hose reel, aux. hyd., 8,000 lb. fronts, 13,000 lb. rears, 245/70R19.5 dual tires

DUMP TRUCKS

2005 Chevrolet C5500 single axle dump truck, Duramax diesel, Rugby 11' box, 7,000 lb. fronts, 13,000 lb. rears, spring susp., pintle hitch, 225/70R19.5 tires, 187,952 miles
1995 GMC Topkick single axle dump truck, crew cab, 7 liter, 6 spd. high/low, spring susp., 10' box, combo gate, pintle hitch, air, electric, 22.5 tires, shows 62,796 miles
1995 IHC 2674 tandem axle dump truck, M11 Cummins, 330 hp., automatic, Camelback susp., double frame, diff lock, rock box, manual roll tarp, air gate, pintle hitch, air, 190" WB, 275/80R22.5 front tires, 11R22.5 rear tires, shows 75,738 miles, work orders available

PICKUPS W/BEDS

2019 Chevrolet 3500HD std. cab, Vortec, automatic, 4WD, cloth interior, CM 112"x89" skirted flatbed, (4) toolboxes, gooseneck ball, receiver hitch, LT235/80R17 dual tires, 23,130 miles
2018 Chevrolet 3500HD, std. cab, Vortec 6.0L V8, automatic, 4WD, cloth interior, rear camera, CM 9-1/2"x93" truck bed, front side toolbox, front grill guard, LT235/80R17 dual tires, 68,790 miles
2018 Chevrolet 3500HD std. cab, Vortec 6.0L V8, automatic, 4WD, cloth interior, Chisholm Trail 115"x86" bale bed w/remote, front side toolbox, LT235/80R17 dual tires, 8,930 miles, bale bed S/N19068
2014 Ford F350 XL Super Duty, Super Cab, 6.2L V8, automatic, 4WD, CM 112" skirted work bed, (6) toolboxes, gooseneck ball, receiver hitch, LT245/75R17 dual tires, 94,670 miles
2014 GMC, reg. cab, dually, Vortec V8, automatic, 4WD, cloth interior, electric locks & windows, shop-built 11"x90" flatbed, receiver & gooseneck ball hitches, 235/80R17 tires, 139,131 miles

PICKUPS W/BOXES

2020 Ford F250 King Ranch, crew cab, 7.3L gas, automatic, 4WD, leather, heated & cooled seats, keyless entry, backup camera, moonroof, rear heat, navigation, power locks, windows, & seats, 6-1/2" box, spray-in bedliner, tonneau cover, cab rear camera, 5th wheel hitch, rear step, EZ-Fold tailgate, folding running boards, 275/65R18 tires, 28,171 miles
2020 Chevrolet 2500HD, Z71, 6.6L V8, automatic, 4WD, leather, camera, backup assist, 6-1/2" box, rear tailgate, push button, running boards, gooseneck & receiver hitches, LT275/65R20 tires, 37,771 miles
2014 Ford F150 Super Cab, 5.0L, automatic, 4WD, 6-1/2" box, receiver hitch, LT265/70R17 tires, 119,940 miles
1999 Chevrolet 1500 Super Cab, 5.3L gas, automatic, 4WD, leather, 6-1/2" box, tonneau cover, receiver, P265/75R16 tires, 182,128 miles

DETACH, FLATBED, BELLY/SIDE DUMP & DRY VAN TRAILERS

2017 XL Specialized HG-110 tri-axle trailer, 51'x108", 26" well, side ext., front ramps, 275/70R22.5 tires
1997 Fontaine tandem axle spread axle flatbed trailer, 48'x96", 9' spread, sliding winch rail, 295/75R22.5 tires
1987 McCoy tandem axle belly dump trailer, spring ride, push block, 11R24.5 tires
Trail King tri-axle side dump trailer, 43', Sidekick electric roll tarp, spring susp., push block, 11R22.5 tires
1983 Stoughton ASVW-48ST tandem axle dry van, 48', rear slide, wired w/lights, shelving, 11R22.5 tires, used for storage

PINTLE HITCH TRAILERS

2020 Titan tri-axle pintle hitch flatbed trailer, 24'x96", 6' ramp, front toolbox, ST235/85R16 tires
Trailorama tandem axle pintle hitch trailer, 24'x96", 5' ramps, 215/75R17.5 tires
2009 TowMaster tandem axle pintle hitch trailer, 17'x81", 54" folding ramps, ST235/80R16 tires

Online Equipment Starting at 6PM

PIPE FUSION EQUIPMENT

McElroy TracStar 500 Series track fusion machine, 6"-20", 4-jaw carriage, 20" trimmer, Kubota diesel, 3,857 hrs.
McElroy TracStar 500 Series II track fusion machine, 6"-20", 4-jaw carriage, 20" trimmer, Kubota diesel, 1,111 hrs., S/NC45266
McElroy down heater plates, (2) 12", (2) 20"
McElroy 1x4 Pit Bull fusion tools
T.D. Williamson 1x4 fusion tools
T.D. Williamson saddle irons
(3) McElroy tripod pipe rollers, 6"
(6) McElroy pipe rollers, 12"
(2) Cable cradles, 3-roller
Mustang squeeze offs, 4" & 8"
Crescent Pipe Tong calipers, 16", aluminum
McElroy inserts, aluminum: 16", 14", 12", 10", 8", 6"
McElroy DIPS, 6"

McElroy IPS, 8" & 6"
Central electrofusion processor
Electrofusion pipe scraper
Friamat electrofusion machine
Pneumatic dryer
(2) SideWinder saddle machines
(2) McElroy DynaMc 6"-12", 412 hp., 2-jaw carriage, 12" heater plate, 12" trimmer, S/NC63266, S/N45265
T.D. Williamson fusion machine, 6"x8", heater plate, trimmer
T.D. Williamson asst. dyes
(2) McElroy Hot Tap machines, 4"
T.D. Williamson Hot Tap machine, 6"x8", PS2000XXL drilling machine
T.D. Williamson Hot Tap machine, 6"x8", for parts only
Pneumatic saws & blades, saw guide
Pneumatic wrench, 3/4"
McElroy side wall clamp, 8"

CONSTRUCTION SUPPORT & RELATED ITEMS

Shop equipment and tools
 Large amount of support equipment

GOOSENECK TRAILERS

2019 Titan tandem axle gooseneck trailer, 30'x101", 6' ramps, front toolbox, ST235/80R16 tires
2012 Parker tandem axle gooseneck trailer, 36'x96", 5' equipment ramps, ST235/80R16 tires
2012 Pro-Trak tandem axle gooseneck trailer, 31'x96", dovetail, 54" ramps, ST235/80R16 dual tires
2012 Delta tandem axle gooseneck trailer, 30'x96", 5' ramps, ST235/80R16 tires
2015 PJ tandem axle gooseneck trailer, 25'x84", 8' front, 17" tilt bed, ST235/80R16 tires
2012 Pro-Trak tandem axle gooseneck trailer, 27'x101", 4-1/2' ramps, ST235/80R16 tires
2012 Road Clipper tandem axle gooseneck dump trailer, 16' dump box, manual tarp, combo gate, 235/80R16 tires
1999 Western Pro tandem axle gooseneck trailer, 40'x96", 5' ext., ST235/80R16 tires

BUMPER HITCH TRAILERS

2018 PJ tandem axle bumper hitch trailer, 20'x83", 5' fold-down ramps, ST235/80R16 tires
1995 Parker tandem axle bumper hitch trailer, 18'x81", ramps, ST225/75R15 tires
Tandem axle bumper hitch trailer, 184"x93", 7-14.5 tires
Single axle utility trailer, fold-down ramp

ENCLOSED TRAILERS

2011 Haulmark tandem axle gooseneck enclosed trailer, 22'x96", fold down rear door, driver side rear door, passenger side rear & front doors, 215/75R17.5 tires
2012 Haulmark Extreme tandem axle enclosed trailer, 16'x76", double rear & side door, ST225/75R15 tires
2014 United Trailers tandem axle enclosed trailer, 12'x84", fold-down ramp, side door, 3,500 lb. axles, ST225/75R15 tires

AIR SYSTEM TRAILERS

2004 H&H tandem axle enclosed trailer, set up as air system trailer, 16'x78", double rear & side doors, includes hose reel, fire extinguisher mounts, wired for electricity, Scotch 30 min. air packs, (4) bottles compressed air, ST225/75R15 tires
2013 Haulmark tandem axle bumper hitch V-nose enclosed trailer, 14'x76", double rear & side door, set up as air system trailer, ST215/75R14 tires, hail damage

TRACTORS

2013 John Deere 5100M, MFWD, 16 spd., LH reverser, 4 hyd., 3 pt., PTO, John Deere H260 loader, quick connect, 82" bucket, front hyd., fender controls, 13.6TL24 tires, 420/85R34 rear tires, 1,007 hrs., S/N1LV5100MECJ440307
1993 Ford 7840, 2WD, CAH, powershift, pedal decelerator, 4 hyd., 3 pt., 540/1000 PTO, electrical hookup, 11.00-16SL front tires, 18.4R38 rear tires, 5,535 hrs., S/NBD159253G0SFE6PVV

ROCKPICKERS

Degelman RT70S chain-style rockpicker, S/N16061
Degelman R570 chain-style rockpicker, S/N4553

DISCS & HARROW

Farm King 395 disc, 10', 9" spacing, 11L-15F1 tires
Land Pride disc, 8', 7" spacing, quick hitch, S/N858853
Disc, 12"
Harrow, 3-section

UTV & AUTOMOBILE

2012 Polaris Ranger side-by-side UTV, 6x6, 800EPI, manual tilt bed, rear toolbox, lights, receiver hitch, AT25X10-12 front tires, AT25x11-12 rear tires, 2,059 miles
2000 Mercury Grand Marquis LS sedan, 4.6L, 246,904 miles

OTHER EQUIPMENT

2015 Woods BW1800X batwing mower, 18', tri-fold, dual blade, spring susp., safety chains, pneumatic tires, 1000 PTO, S/N1268828
Straight blade, 9"
Boss XT Smart Shield poly V-plow, 9'2", lights, electronics, mounting brackets, S/N40119656

CONSTRUCTION SUPPORT EQUIPMENT

2018 Atlas YA3064440J0537610 air blower, 2700 rpm, 185R140, 110 hrs., S/NAPP537610
2015 Bomag 65 tamper packer, Honda GX100 gas motor
Mustang LF-88 gas tamper packer, Loncin 196cc motor
Ingersoll Rand light plant, 4,653 hrs., no lights w/unit
Ingersoll Rand air compressor, ST225/75R15 tires, 751 hrs., S/N569789UD0B02
Sullivan-Palatek D210Q air compressor, shows 2,511 hrs.

Magnum HDM-2030HG air compressor, 200 psi, Honda GX630 motor, S/N10010783
Therm Dynamics 600DR heater, shows 4,978 hrs., S/N012006C16
Wacker BS700 packer
Single axle spool trailer, ST235/80R16 tires
(2) shop-built mop boards, 8'

GENERATORS

Briggs & Stratton Elite Series generator, 10 hp., 5,550 watt, 8,550 starting watts, S/N1012520499
Generac GP5500 gas generator, Generac H0V 389cc
Honda EU2000 generator, 120v
Husqvarna 1365GM generator, Honda gas motor
Tahoe TPI 9000 LXU industrial grade generator, 9,000 watt, 420cc OHV motor
Tahoe TPI 7000 LXH diesel generator, 120v, 60 Hz, S/NHP13095288
DeWalt DXGN14000 generator, Honda GX630 motor, electric start, 30-50 amp, S/NPW50359250B
Honda EU3000IS generator, electric start, 20 amp, 120v

SHOP EQUIPMENT

Lincoln Ranger electric welder, Kohler CH730 gas motor, 225 DC, 645.2 hrs.
Lincoln Ranger electric welder, Kohler CH235 gas motor, 225 DC
Buddy Lube oil system, 4-compartment, filter storage, 5'x23"x6-1/2"
John Deere HSP-3504-3JGH pressure washer, 3500 psi, burner, Honda GX390 motor, w/wand, electric start, S/N15130803
Tahoe power pressure washer, Honda GX200 motor, 2700 psi, 3.3 gpm, wand
Landa power washer, 2500 psi, 3.8 gpm, Honda GX390 motor" 11070110-163055
Mi-T-M pressure washer, 2.3 gpm w/wand, S/NWP2700-4MHB
Rolair electric air compressor, 5.5 gal.
DeWalt air compressor, 4 gal., 120v
Tahoe air compressor, Honda GX200 motor

TANKS

(2) L-shape fuel tanks, 105 gal., 5', one w/GPI hand pump
100 gal. fuel tank, 45", Fill-Rite pump, 12v, 15 gpm
Aluminum L-shape fuel tank, 100 gal., GPI pump, 12v, w/top-mount toolbox
Fuel tank, 100 gal., 54", GPI pump, 12v, 15 gpm
100 gal. fuel tank, 45"
L-shape fuel tank, 88 gal., 54", Fill-Rite pump, 12v, 15 gpm
Fuel tank, 45"x12"x24"
Service tank, 4'x36"x36", Fill-Rite pump, 12v, 20 gpm
Fuel tank, 36", Fill-Rite pump, 12v, 15 gpm
1,350 gal. poly tank
1,025 gal. poly tank on pintle hitch trailer, 12.5L-15SL tires
550 gal. poly tank
300 gal. poly tank, Super Reel, Honda GX240 engine
100 gal. poly tank, electric motor

PUMPS

Duro-Max transfer pump, 7 hp., 3" & 2" plumbing
Honda transfer pump, 5.5 hp., Honda GX160 pump, 2" plumbing
Honda transfer pump, 2", Pacer pump, S/NSE2ULE5H0C
Multi-Power 30CX transfer pump, 3" plumbing
Multiquip transfer pump, 11 hp., Honda GX340 motor
Gas transfer pump, 3" pump, 2" plumbing

SUPPORT & MISC. ITEMS

Storage container, 40'x8'x10"
Belten roll-up van body, 24'x92"
WeatherGuard trailer-mount toolbox, 8', dual door
Better Built SCC toolbox, 5'
Pallet fork extensions, 10'
(2) pallet forks, 60"
Pallet including spreader bars
Misc. bucket teeth
(2) cattle guards
(4) Solideal tires, 33x12-20"
Pallet including (15) Quik Mud Gold clay/shale stabilizer buckets & (1) ClayMaster bucket
Pallet including power washer hose & tubing
Pallet w/Honda WB20XT trash pump, 2"; Generator, 2.8kw; Wisconsin 2" trash pump, 2"; all are non-working
Cub Cadet ST100 weedeater, 159cc, S/N1B045P10350

701.237.9173 | SteffesGroup.com
 Steffes Group, Inc., 2000 Main Avenue East, West Fargo, ND 58078



TERMS: All items sold as is where is. Payment of cash or check must be made sale day before removal of items. Statements made auction day take precedence over all advertising. \$35 documentation fee applies to all titled vehicles. Titles will be mailed. Canadian buyers need a bank letter of credit to facilitate border transfer. Scott Steffes ND81, Brad Olstad ND319, Max Steffes ND999, Justin Ruth ND2019

